



Travelog World for Windows

'Client Management and Accounting solutions for the Travel Industry'

Travelog has worked with the Travel Industry for almost 30 years to meet their accounting needs. Developed in conjunction with IMACS NZ Ltd and Travel Agency Groups, Travelog is a fully integrated Front, Mid and Back Office solution for Retail, Corporate and Wholesale Agents.

Key Travelog System Features

- Integrated (Multi-Branch) General Ledger
- Trial Balance, Profit & Loss, Balance Sheet Reports
- Unlimited Aged History on Financial Reporting
- Handling Travel Agent Service Fees since 1997
- TCF/IATA Client Reporting Compliant
- Agency Sales and Commission Tracking
- Corporate Reports & Forward Booking Reports
- Audit Trail for GST & BAS Reporting
- 1-800 Phone Support Including Upgrades
- Easily installed On-Line Program Updates
- Wholesale Documentation & Rates Database
- Daily Banking Reports and Reconciliation
- Foreign Currency Commission Conversion
- Client Documentation (E-Mail, Word, PDF etc)
- Easy conversion from Serko / Profire
- PRISM Reporting for Corporate Agencies
- Local Trainers in SYD, MEL, ADL, BNE

Back Office - General Ledger:

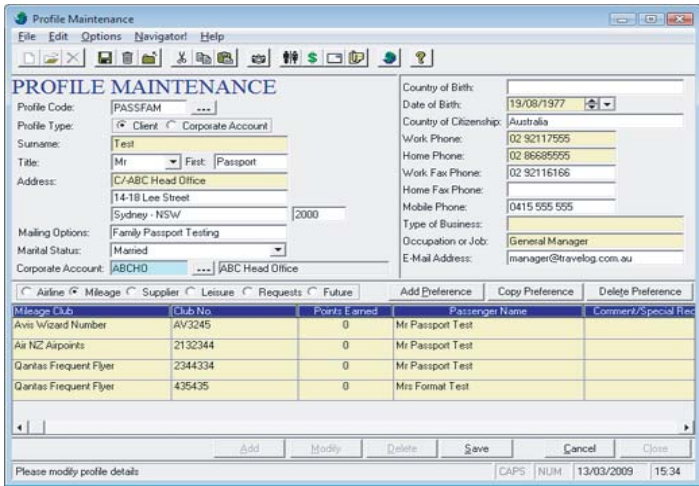
The integrated General Ledger eliminates the need to run separate accounting systems eg; MYOB. Data entered in the Travel Services module flows seamlessly into the back office updating the General Ledger. Aged history and budget comparisons are standard features with both Transaction Date OR Departure Date accounting and Profit & Loss and Balance Sheet Reporting.

Front Office - Consultant Module:

The "Travel Services" module provides a seamless interface to your chosen CRS System providing a single point of entry to maintain all Air, Land, Insurance and Sundry charges like service fees required to complete a booking. Full client documentation is also a standard feature together with one click supplier payment screens, client transactions & on-screen booking history

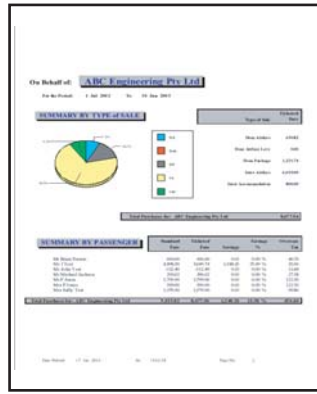
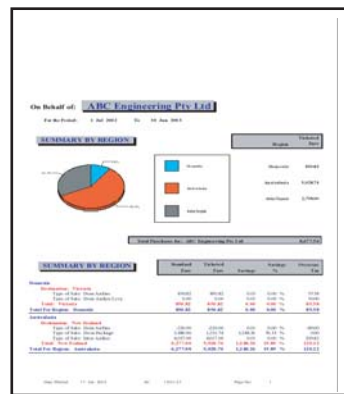
TRAVELOG WORLD		Travelog Training				GENERAL LEDGER PROFIT & LOSS by Transaction Date				Page: 1
General Ledger Profit & Loss		Printed By: Tvdmins		Consolidated by Branches for the General Ledger Period to: January 2009		Date: 13/03/2009		Time: 16:27:43		
Account Code	Account Description	Actual	Last Year	Variance	Var %	Actual	Last Year	Variance	Var %	
REVENUE STATEMENT										
INCOME										
1010	Commission	(4,402.29)	(387.40)	(4,013.89)	91	(18,348.58)	(12,806.16)	(5,542.42)	30	
1011	Commission Transferred					(28,000.00)	(28,000.00)		100	
1012	Remittance Mark Up Commission	(165.88)		(165.88)	100	(738.84)	(672.43)	(66.41)	88	
1020	Overseas Commission	(95.91)		(95.91)	100	(540.17)	(29.54)	(510.63)	95	
1090	Interest Received					(157.72)		(157.72)	100	
1100	Customer Fees Received					(46.91)		(46.91)	100	
1150	Foreign Exchange Gains - Losses					(29.69)		(29.69)	100	
	TOTAL INCOME	(4,658.08)	(387.40)	(4,270.68)	92	(47,506.91)	(12,928.33)	(34,578.58)	73	
EXPENDITURE										
2010	Accounting Fees					961.00	909.08	51.91	5	
2020	Advertising & Promotion					1,090.91		1,090.91	100	
2100	Bank Charges	37.45		37.45	100	54.90		54.90	100	
2200	Cleaning		109.09	(109.09)		23.00	109.09	(86.09)	336	
2280	Credit Card Merchant Fees	598.77		598.77	100	1,775.24	(246.55)	2,021.79	114	
2281	Recovery of Credit Card Fees	(322.59)		(322.59)	100	(1,668.48)	(54.80)	(1,613.68)	87	
2370	Electricity & Power					495.45	390.61	104.84	21	
2400	Franchise Fees					600.00		600.00	100	
2500	Interest Paid	4,985.70		4,985.70	100	4,985.70		4,985.70	100	
2520	IT Services					252.27		252.27	100	
2700	Motor Vehicle Expenses					209.91		209.91	100	
2705	Office Expenses					3,006.54	(24.63)	(2,481.91)	83	
2750	Printing & Stationery					650.00		650.00	100	
2800	Rent Rates Paid					4,618.19		4,618.19	100	
2810	Salaries and Wages	700.00		700.00	100	2,410.00	2,460.00	(49.00)	99	
2860	Telephone & Fax		291.82	(291.82)		3,637.18	3,946.35	(309.17)	99	
2970	Traveling & Accommodation					1,800.00		1,800.00	100	
	TOTAL EXPENSES	6,399.33	350.91	6,048.42	95	27,884.81	8,374.98	(19,509.83)	70	
PROFIT & LOSS APPROPRIATION ACCOUNT										
	Net (Profit) Loss From Trading	1,741.25	(56.49)	1,777.74	100	(20,022.10)	(4,553.35)	(15,468.75)	77	

TRAVELOG WORLD		Travelog Training				GENERAL LEDGER BALANCE SHEET by Transaction Date				Page: 1
General Ledger Balance Sheet		Printed By: Tvdmins		Consolidated by Branches for the General Ledger Period to: February 2009		Date: 13/03/2009		Time: 16:56:00		
Last Year	Account Code	Branch	Account Description	Current Balance	Movement					
BALANCE SHEET										
CURRENT ASSETS										
	661,101.83	4100	Bank Account 1 - Client Account	716,207.13	55,405.30					
	548,797.73	4100	Bank Account 2 - General Account	342,984.46	(4,813.27)					
	67,398.23	4120	Bank Account 3 - Not In Use	7,110.00						
	2,345.00	4160	Debitors Control Account	2,143,647.79	46,349.56					
	(2,000.00)	4680	Prepayments	(2,000.00)						
	4,978.21	4800	GST on Purchases	7,657.44	(2,679.23)					
	1,312,521.30		TOTAL CURRENT ASSETS	1,418,651.82	106,130.52					
NON CURRENT ASSETS										
	12,500.00	5100	Furniture & Fixings at Cost	12,500.00						
	6,500.00	5200	Office Equipment at Cost	6,500.00						
	(3,000.00)	5210	Less: Accumulated Depreciation	(3,000.00)						
	10,000.00	5300	Motor Vehicles at Cost	10,000.00						
	(5,000.00)	5310	Less: Accumulated Depreciation	(5,000.00)						
	300,000.00	5400	Land & Buildings at Cost	300,000.00						
	(5,000.00)	5410	Less: Accumulated Depreciation	(5,000.00)						
	3,000.00	5500	Formation Cost	3,000.00						
	409,000.00		TOTAL NON CURRENT ASSETS	409,000.00	0.00					
	1,721,521.30		TOTAL ASSETS	1,827,651.82	106,130.52					
CURRENT LIABILITIES										
	(890.00)	6120	Sundry Creditors & Accounts	(890.00)						
	7,787.73	6123	G.I. Imbalance Account	7,787.73						



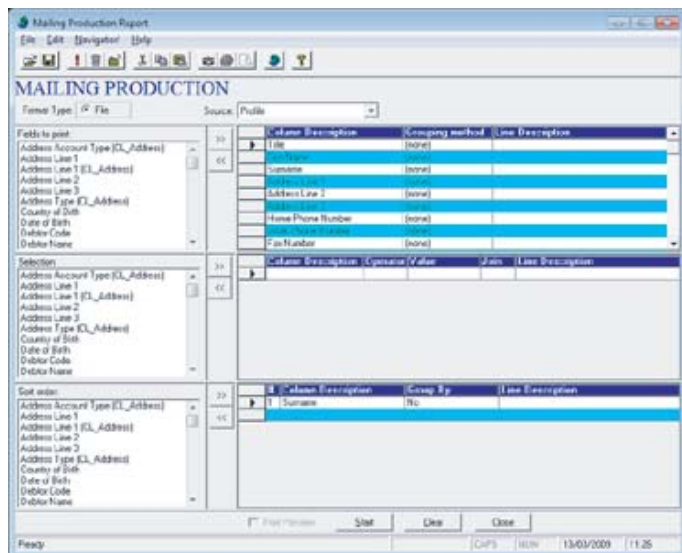
Agency Sales Reporting:

The Sales Reporting module captures all sales information processed by the consultants such as source, destination, airlines, type of sale, cash or credit sales all at the click of a button. With unlimited aged history you can quickly and easily extract the reports you need. All sales are automatically captured as they are processed by Travel Consultants with daily sales and forward booking reports standard.



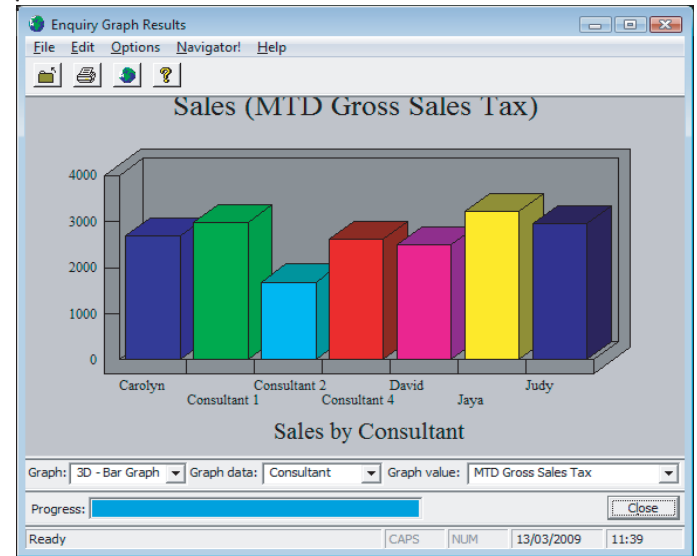
Wholesale - Rates Module:

Released at select sites since late 2005, Travelog's Wholesale module is now available to users of v1.10 and above with the ability to store Supplier Rates for easy access by Consultants. This feature includes easy to use foreign currency commision converters. This allows users to select supplier rates and provide client documentation quickly and easily when used in conjunction with 'Travel Services'



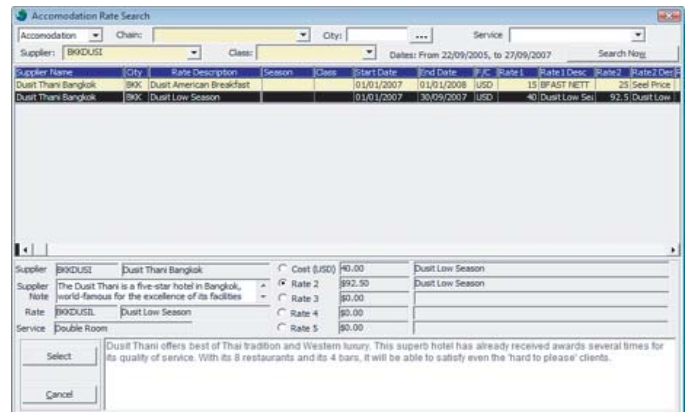
Client Profiling:

Client Profiles can be maintained allowing preferred and un-preferred suppliers to be entered along with their rates and requirements. An unlimited number of passengers can be attached to one profile with their own preference and payment history attached. A quick enquiry is provided for client history including Receipt and Payment details.



Corporate Reporting:

Travelog records all corporate account activity, allowing extensive reporting on travel arrangements. It provides details on key personnel, travel rules and regulations plus form of payments and authorities. The system can produce statements for a given period and has an efficient credit control mechanism. An Aged Trial Balance can be produced at any time, to make credit control management easy and efficient.



CRM Features - Mailing Production:

The Mailing Production module allows data to be extracted in TXT or CSV file formats compatible with many other programs such as Word and Excel for the production of mailing labels, envelopes and an email database. Information from Clients, Debtors, Creditors, Invoices and any General Ledger Accounts can be easily extracted.



To see what Travelog can do for your business, contact us today to arrange a demonstration...

Travelog World for Windows Pty Ltd
 5/14 Lee Street, Sydney NSW 2000
 Tel +612 92117555 - Fax +612 92116166
 email: info@travelog.com.au
 web: www.travelog.com.au